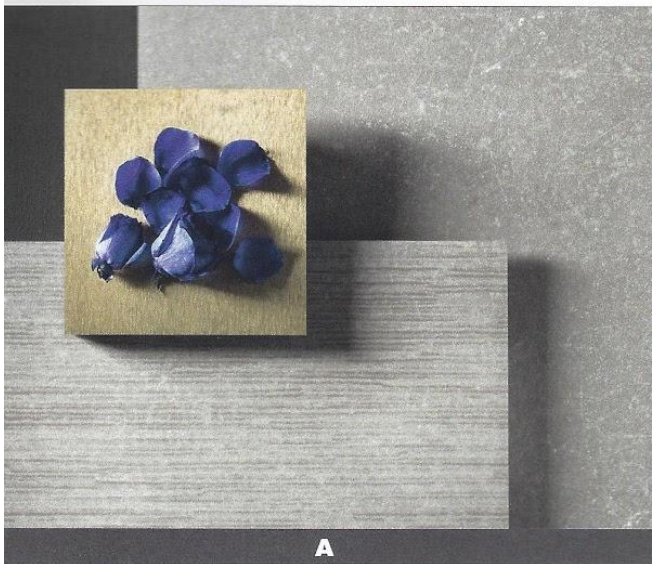
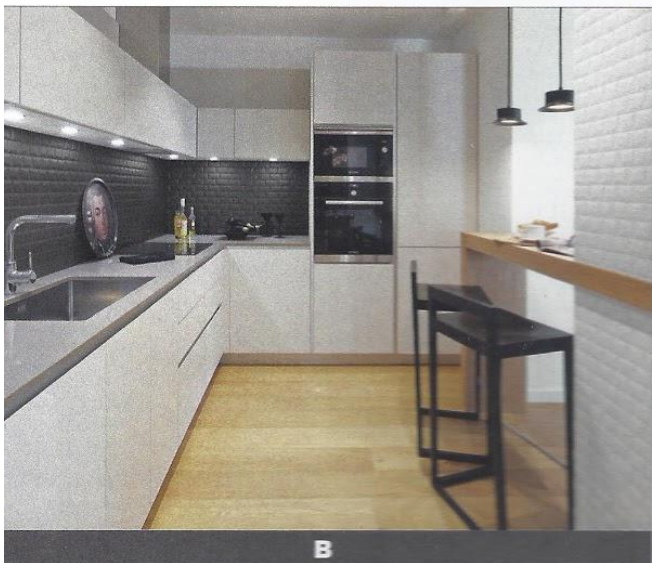


# Cersaie 2017 Product Showcase



A

Each year at Cersaie, the International Exhibition of Ceramic Tile and Bathroom Furnishings, new and innovative products are revealed. This year, the event was held from September 25 to 29, 2017 at the Bologna Exhibition Center in Bologna, Italy, where it welcomed 111,604 attendees. The event had 869 exhibitors, one-third of which were foreign companies from 41 different countries.



B

The Gent collection is inspired by the distinctive allure of Nordic stone, in particular the Pierre Bleue variety typical of the Flanders, which ABK is proposing in an utterly new version with an aged, timeworn appearance. Ceramic is transformed into reclaimed stone with a scratched, stained surface, giving it unique appeal that brings together heritage and modernity. In keeping with the contrasts typical of the latest interior design trends, Gent can play a key role even in the most minimalist locations.

[www.abk.it](http://www.abk.it)

A

Exaltation of lines, plasticity, attention to detail. A careful attention to detail gives birth to Libra, where combinations, contrasts and harmonies come alive from a surprising use, almost disguised, of irregular geometries. The modules, combined in a random flow, produce effects of light and shade and games of lights and shadows. Libra adds a new dimension to surfaces, causing them to shake under the influence of light movements.

[www.appianimosaic.us](http://www.appianimosaic.us)

B



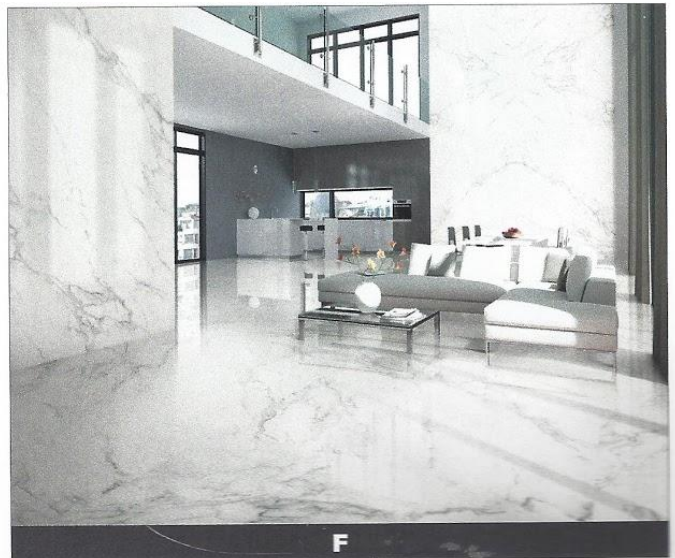
C



E



D



F

Arblu introduces in its product range the laundry project Lavandèria, a reinterpretation of domestic spaces with an eye to functionality, without giving up to design and aesthetics of materials. The laundry area takes shape within the home environment by getting its own well-defined space. Different solutions and elements are proposed: open shelving units, basin units and tall storage units for washing machines and dryers, floor-standing tall units, laundry basket units and fixed-size accessories.

[www.arblu.it](http://www.arblu.it)

C

With the new Essential collection, Ariana rediscovers the natural appeal of wood. The series is inspired by the natural materials used in furnishing and architecture and in particular by untreated wood, which is ideal for creating warm, welcoming atmospheres. Essential comes in a palette of four colors. Almond is the palest tone, designed to enhance the luminosity of interiors. The color Beige stands out for its understated elegance that blends in perfectly with the most varied styles of furnishing. Oak is the warmest and most intense color in the range, while Grey is the ideal version for spaces with a contemporary design.

[www.ariana.it](http://www.ariana.it)

D

Three-dimensional surfaces for spectacular walls that decorate every type of interior with elegance and simplicity. Atlas Concorde's 3D Wall Design surfaces, enhanced by natural or artificial lighting, produce a play of light and shadows that morphs depending on the perspective which changes the visual perception of the wall tiles. The range consists of three-dimensional ceramic surfaces that combine a sculpted look with the advantages of the best ceramic wall tiles made of white clay. Clear-cut shapes, sinuous ripples, multi-faceted patterns and waves in relief: everything is strictly three-dimensional.

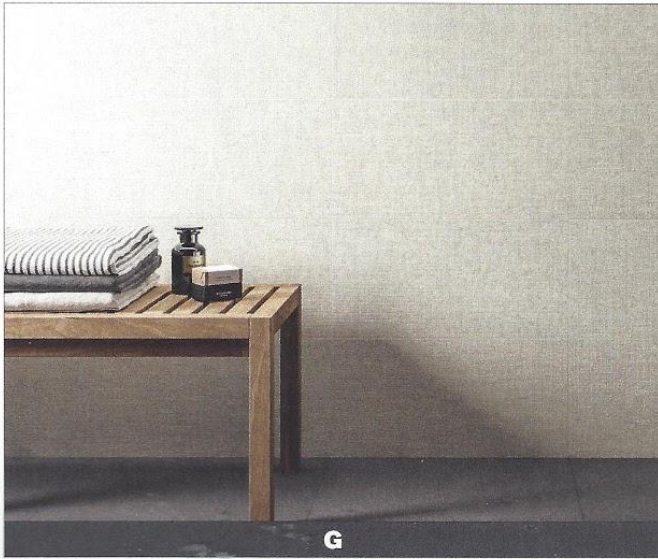
[www.atlasconcorde.com](http://www.atlasconcorde.com)

E

New sizes of porcelain gres serving contemporary architecture: fine porcelain stoneware available in large size, 160 x 320 cm, and its multiples, with a thickness of only 6 mm, designed to achieve the best results in the most inventive projects. The various sources of inspiration, that go from the most prestigious marbles worldwide, natural stones, onyx to the modern resins, make extraordinary eize suitable for all kind of ambience, wall or floor.

[www.avaceramica.it](http://www.avaceramica.it)

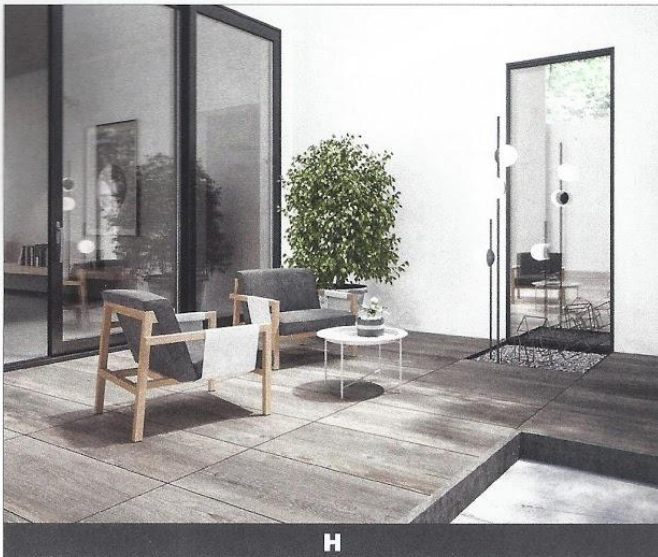
F



G



I



H



J

Blustyle is presenting the new Blutech collection which represents a new development in technical, non-enamelled porcelain stoneware products. In fact, the product uses a unique manufacturing technique which combines performance with elegance. The coloration of the entire body of the tiles in this series produces an extremely elegant look: the surface and body have the same color tone, guaranteeing a homogeneous, compact color palette, enriched by shades of tone-in-tone color; it is the result of an innovative, patented "double loading" process, unique in its kind.

[www.blustyle.it](http://www.blustyle.it)

G

Country wood has an original aesthetic designed combining a rustic feel with contemporary vibes. These romantic surfaces seem to conserve stories of the passing of time, with the subtly worn style giving the space a flavor of times gone by, allowing them to work well with both modern and salvaged furniture. Available in the 20- x 120- and 15- x 120- cm formats and suitable for both internal and external areas, the collection also comes in a special outdoor version – 45 x 90 cm with a thickness of 20 mm – in order to guarantee aesthetic continuity throughout the spaces.

[www.casalgrandepadana.com](http://www.casalgrandepadana.com)

H

Uptown is the Century floor collection for modern environments, where design and architecture combine to deliver style and functionality. The Uptown tiles present the subtleties and intense colors of the natural stones that inspired the collection, crossed by delicate veining patterns adding dynamic depth. Uptown's refined versatility is emphasized by the 120 x 240 cm FIRE slabs produced with Continua+ technology, whose revolutionary technical and aesthetic features extend the traditional application scope of the ceramic tile.

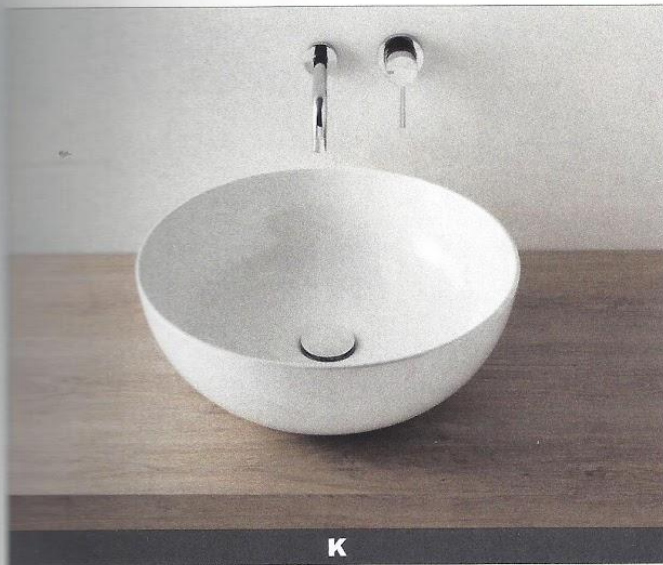
[www.century-tile.com](http://www.century-tile.com)

I

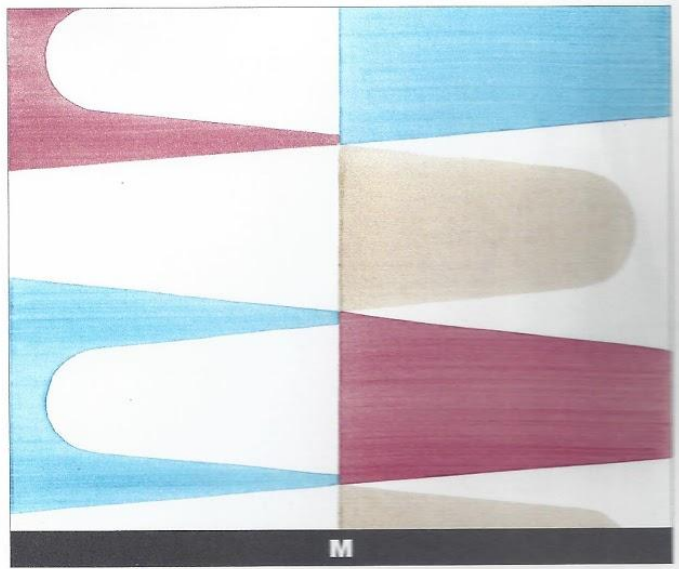
Corrispondenza, thanks to its geometric appearance, as well as, its bright and polished colors, is a collection rich of details capable of making each interior design project simple and, therefore, sophisticated. Being entirely handmade, each tile differs from one another, becoming a unique and ideal decor.

[www.caramicabardelli.com](http://www.caramicabardelli.com)

J



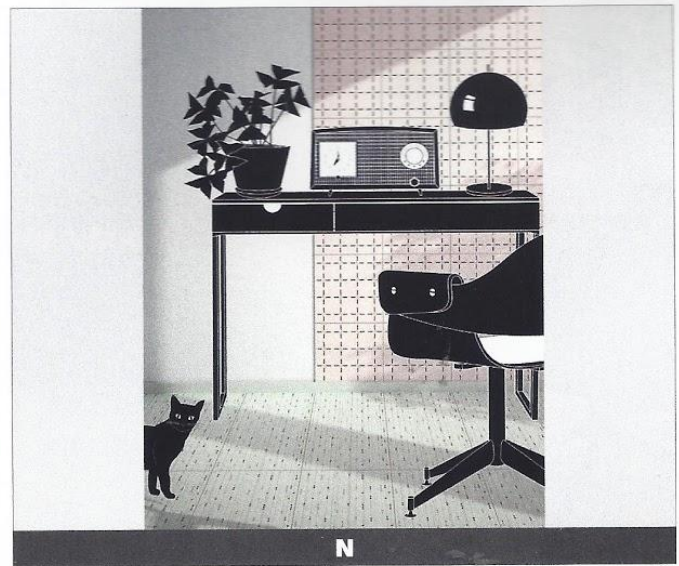
K



M



L



N

The T-Edge collection combines a minimalist aesthetic with distinct functionality, thanks to the innovative Ceraslide enamel developed to provide greater resistance to stains, dirt and abrasion, along with the Bataform antibacterial treatment applied during the manufacturing process to reduce the presence of germs and bacteria.

[www.ceramicaglobo.com](http://www.ceramicaglobo.com)

K

The six precious colorations, with their attractive warm tones, have been accurately selected to bring out the natural essence of wood in all its beauty and imperfection. The tiles feature shade variations, capable of creating different moods depending on how they are laid, in a bewitching maze of contrasts and hues. Flooring tiles are available in two different formats: 15 x 100 cm and 7.5 x 45 cm. A matching 15- x 61- cm format can be used to add a whole new layer of style and movement to your walls, thanks to the scenic 3D effect created by the tiles' varying thickness (7 to 11 mm).

[www.ceramicarondine.it](http://www.ceramicarondine.it)

L

The Happy Days Collection was born from the idea of representing the '70s. Inspired by the title of the famous movie telling the story of the generation of U.S. teenagers who have lived the "American Dream." The new collection of Ce.Vi. Ceramica Vietrese remembers of the '70s atmosphere. With 12 colors, including yellow, gray, light blue, brown, havana, green, turquoise and pink, with geometric patterns such as triangles, circles and ovals that can be combined according to different combinations.

[www.ceramicacevi.it](http://www.ceramicacevi.it)

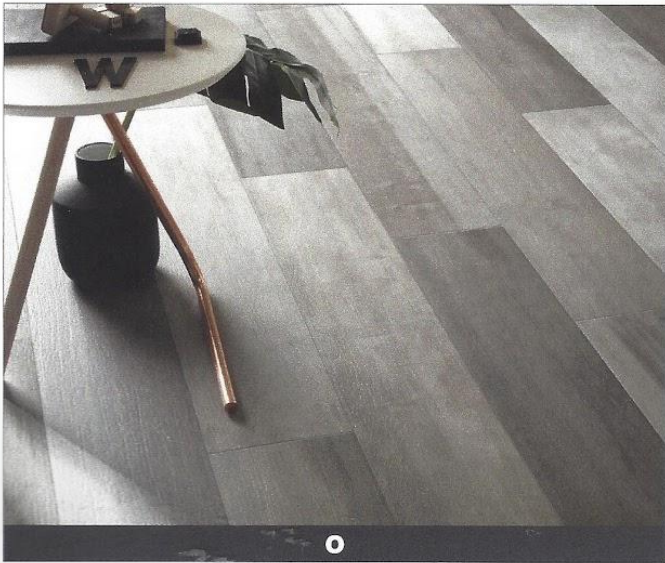
M

Confetti is the new collection of glazed porcelain stoneware tiles designed by Marcante-Testa (UdA) for the brand Ceramica Vogue. A project featuring graphic-inspired patterns evocative of a present perfect capable of guarding the most intimate aspects of people and their memory. Designed for those homes and for those extra residential interiors, like restaurants and hotels, that attract the domestic dimension, since they are the places of expression par excellence of the essential sides of the human character. The Confetti collection is available only in the 25- x 25- cm rectified format, with a 10-mm thickness.

[www.ceramicavogue.com](http://www.ceramicavogue.com)

N

## Products & Trends



O



Q



P



R

Kale Italia welcomed Cersaie 2017 visitors in an area based on an innovative concept, with the latest products of the Edilgres, Edilcuoghi and Campani brands dedicated to the world of design and interior design. Through images and key moments, in a scenic and contemporary context, an original ceiling installation in the lounge area has portrayed the history of the Kaleceramik group, a cutting edge company in the production of high quality ceramics exported all over the world, which celebrated its 60th anniversary in 2017.  
[www.kaleitalia.it](http://www.kaleitalia.it)

O

Following the success of its Timeless series, Cerim presents another six series inspired by the beauty of natural materials. Antique Marble unleashes the force of marble and stone, marrying ancient to modern in a uniquely elegant style without compromising the need for extreme functionality. The collection exploits a variety of finishes, sizes and color themes to satisfy the demands of contemporary architecture and modern lifestyles, without losing its connection to its roots in the past.  
[www.florim.com](http://www.florim.com)

P

Resine is a new porcelain stone-ware collection really modern and original, metropolitan and urban, and, due to its monochrome surface, minimalist, but carried out with a design and a tactile effect absolutely unique. The tile surface is monochromatic, but it stands out for a harmonious combination of scratches, streaks and ridges: it creates an aesthetic effect that it's possible not only to see but also to touch.  
[www.lafabricca.it](http://www.lafabricca.it)

Q

Conkreta is inspired by the creative fusion of concrete and clay, a combination that offers natural character and refined elegance in a subtle but distinctive surface. Mukka takes the typically irregular surface of leather and turns it into a fine and prestigious texture.  
[www.lafaenzaceramica.com](http://www.lafaenzaceramica.com)

R